

# GRINNELL ATHLETIC & RECREATION CENTER FACILITY USE



## GRINNELL ATHLETIC & RECREATION CENTER



The GARC is owned by the Ahrens Park Foundation and sponsored by the Claude W. and Dolly Ahrens Foundation in order to provide the community with reduced-cost access to recreation.

The Grinnell Athletic & Recreation Center (the GARC), located in the Ahrens/Paschall Memorial Park, was built in 1998 and includes a multi-purpose gymnasium, locker rooms, offices and open lobby. The Grinnell Parks & Recreation Department leases the GARC facility year round for their offices and various indoor programs and activities.

The GARC is open to the public for rentals from October 1st through the end of April. The facility has three courts available for basketball, volleyball, tennis, pickle ball or just free play areas. Up to two courts may be reserved by a team, family or individuals, with the third court being left open for public use. Reservations are on a first come, first serve basis with a maximum of 90 minutes per reservation. All reservations must be scheduled in advance through the Grinnell Parks & Recreation Department during normal business hours Monday - Friday 9:00am - 5:00pm. Reservations for courts can be made beginning on October 1st.

The courts are surrounded by a 1/10 of a mile walking track which is also open to the public. All patrons must pay to use the facility. After school programs are available for children through the Fall and Winter Grinnell Parks & Recreation Department Brochure.

### Open Recreation Hours:

Monday – Friday      7:30am - 8:30pm  
 Saturday & Sunday    1:00pm - 5:30pm

### The GARC Admission/Passes:

	Daily	Monthly	Season
Family	—	\$30.00	\$150.00
Sibling (age 9 & up)	—	\$25.00	\$125.00
Single (age 3 & up)	\$3.00	\$18.00	\$90.00

**Punch Pass** – 10 day for \$25.00

**Seniors** – Sign up for your free walking pass  
 Monday - Friday 7:30am - 3:00pm

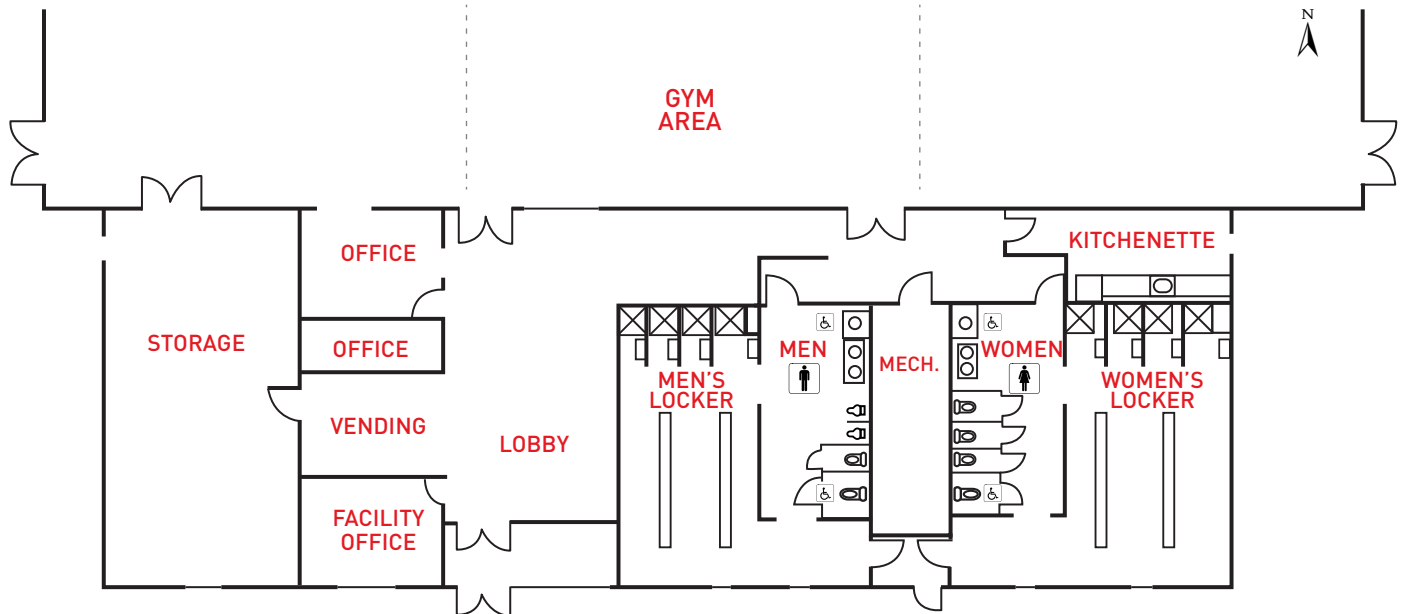
- All children age 8 and under must be accompanied by someone age 16 and older.
- All passes sold to children age 8 and under must be a Family pass.
- All passes must be purchased at the Parks & Recreation Department during normal business hours (Monday - Friday, 9:00am - 5:00pm)

The building or portions of the building may be closed for programming purposes on occasion. Please check the GARC schedule for updates. The building may be closed for inclement weather. Updates will be posted on Facebook. Dates, times and prices are subject to change.

# GRINNELL ATHLETIC & RECREATION CENTER PRIVATE RENTALS



## GRINNELL ATHLETIC & RECREATION CENTER



The GARC facilities are available for rent by non-profit groups only. All reservations made between October and April will be for Saturdays only. All reservations made between May and September can be made for any day of the week. Reservations must be scheduled in advance through the Grinnell Parks & Recreation Department during normal business hours Monday - Friday 9:00am - 5:00pm.

The Grinnell Parks & Recreation Department will have office hours inside the GARC Monday - Friday 9:00am - 5:00pm. Office hours will not be able to be interrupted for gym rentals.

### Rental Fees:

- \$35.00 per hour court rental
- \$100.00 per hour for all the courts
- \$250.00 - four hour/half day rental
- \$500.00 - eight hour/all day

### Rental Rules:

- Renters are responsible for all set-up and clean-up.
- Cleaning supplies provided - trash bags, toilet paper, soap and paper towels. Renter is responsible for re-stocking during and at the end of the rental.
- Vacuum, dry mop and wet mop available for use.
- Renters may have a concession stand.
- No on-site supervisor will be present. Contact numbers will be provided.